

PLAIN CITY
BLOCK 11, PLAT A

TAXING UNIT: 21

SCALE 1" = 50'

SEE PAGE 38

14

2500

NORTH

STREET

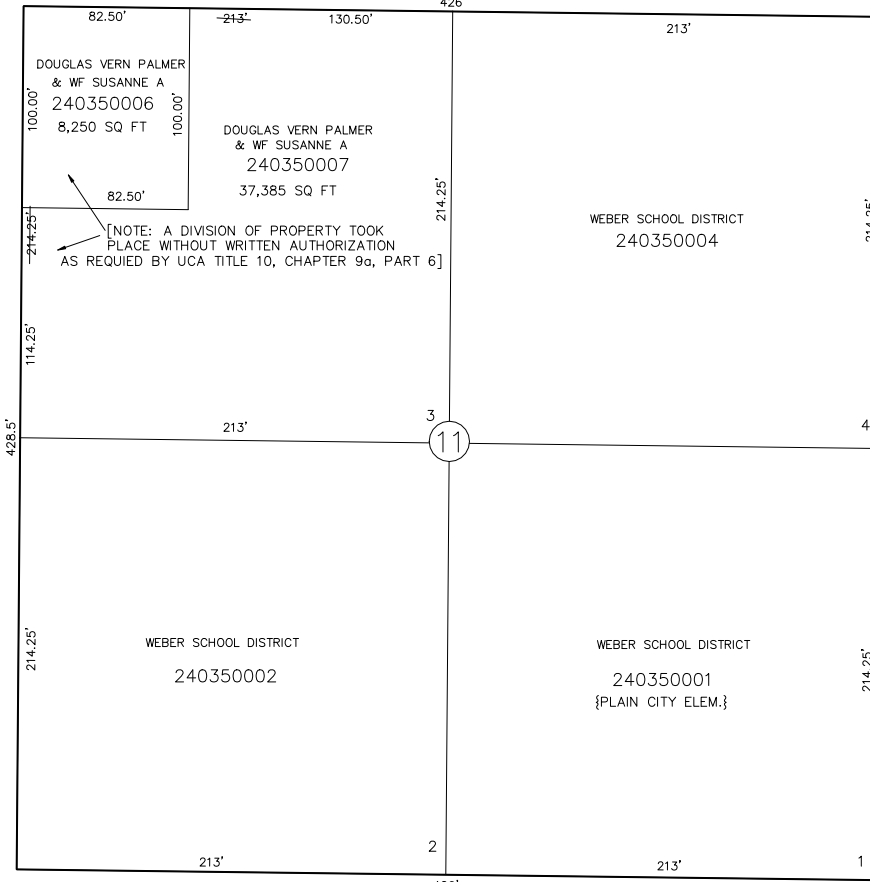
S 89°17' E

STREET

WEST

4425

N 0°27'30" E



DOUGLAS VERN PALMER
& WF SUSANNE A
240350006
8,250 SQ FT

DOUGLAS VERN PALMER
& WF SUSANNE A
240350007
37,385 SQ FT

WEBER SCHOOL DISTRICT
240350004

WEBER SCHOOL DISTRICT
240350002

WEBER SCHOOL DISTRICT
240350001
{PLAIN CITY ELEM.}

[NOTE: A DIVISION OF PROPERTY TOOK PLACE WITHOUT WRITTEN AUTHORIZATION AS REQUIRED BY UCA TITLE 10, CHAPTER 9a, PART 6]

SEE PAGE 34

10

SEE PAGE 36

12

SEE PAGE 32

SEE ORIGINAL DEDICATION
PLAT OF PLAIN CITY IN
BOOK 5, PAGE 80 OF RECORDS.